

USB Engineering Cable RZ-EC4

Note for using Windows XP

CHINO

1 Installation for Windows XP



WARNING

In order to avoid accidents always read and understand these contents.

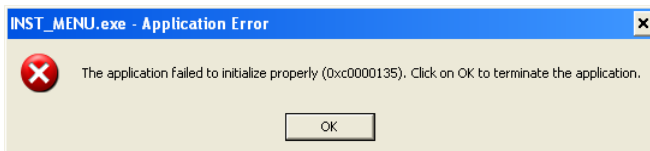
1-1 Installation

1. Power on the PC and start up Windows.

* Log on by a user who belongs to the Administrators group.

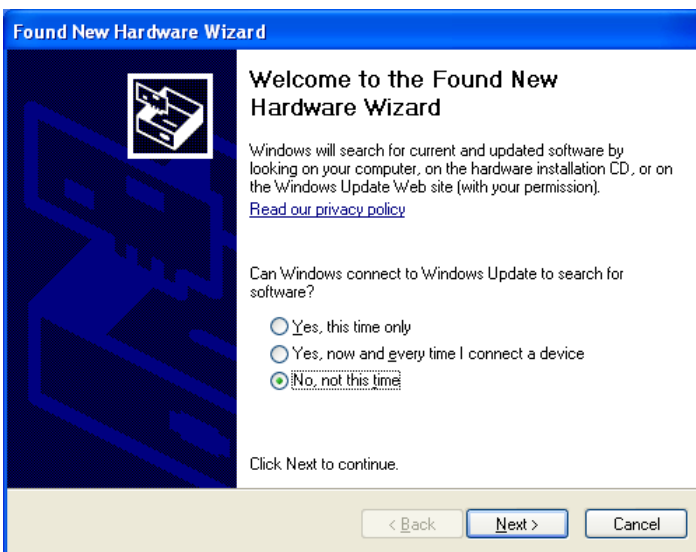
After the start-up process completes, insert the attached CD-ROM into the drive.

*If message on the left is displayed, click [OK] button.



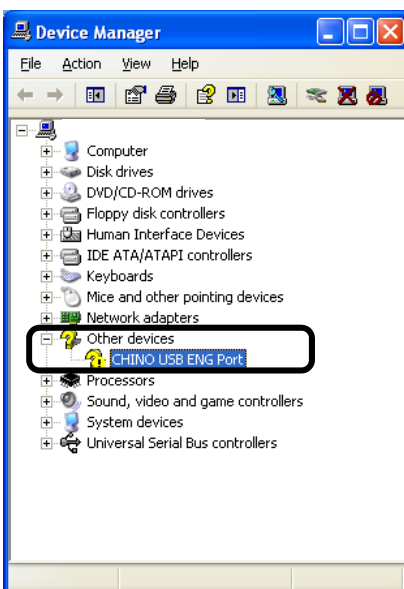
2. Connect the RZ-EC4 cable to the USB port of the PC.

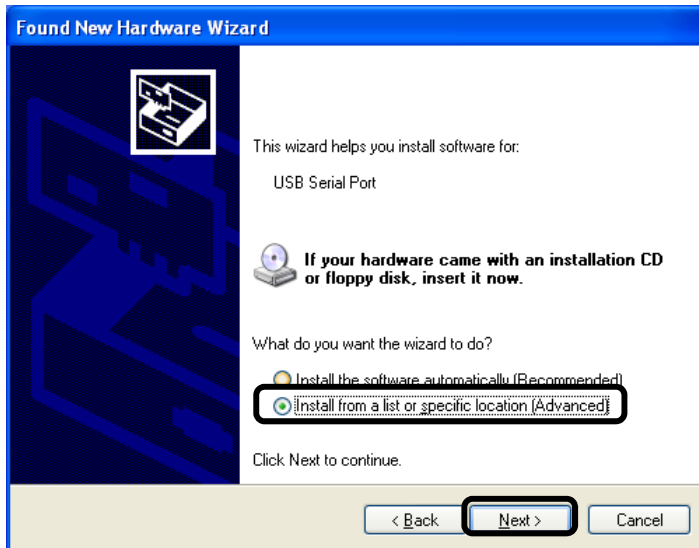
When Found New Hardware Wizard is displayed, select "**No, not this time**" and click the [Next] button.



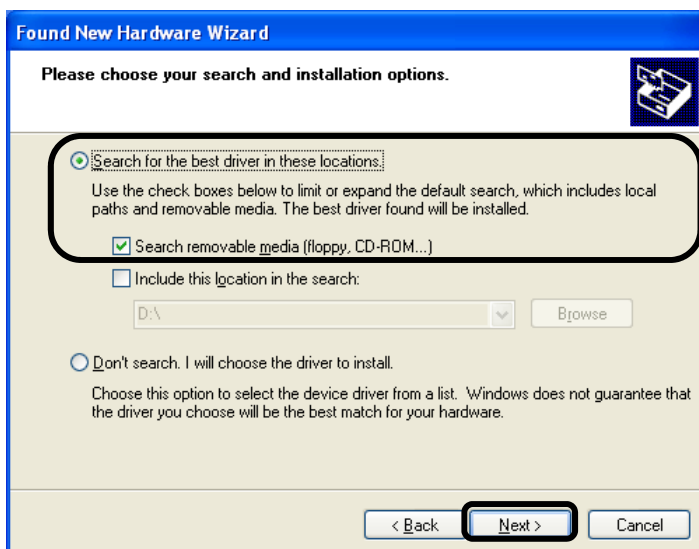
*If Found New Hardware Wizard window is not displayed, start Device manager.

Right-click "Other devices" – "CHINO USB ENG Port" and then click "Driver update".

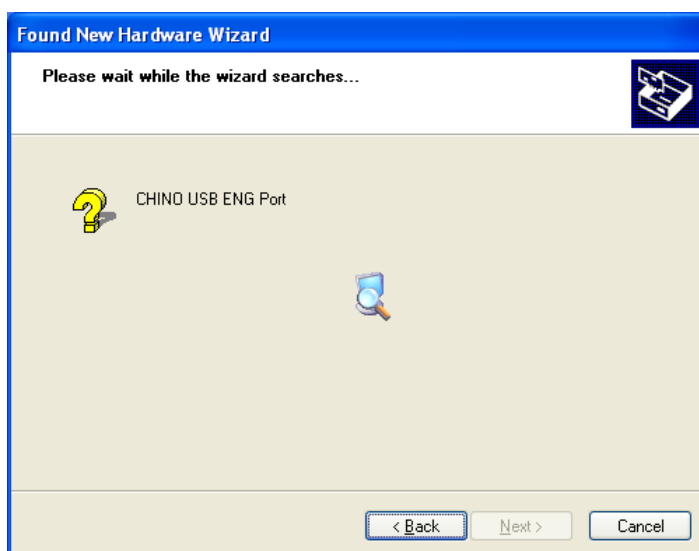


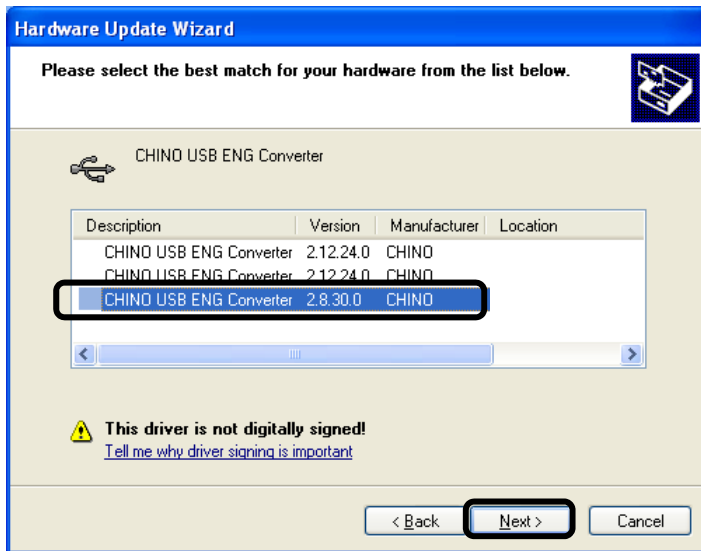


- When the installation method selection window is displayed, select "Install from a list or specific location (Advanced)" and click the **[Next]** button.



- When the window shown left is displayed, select "Search for the best driver in these locations" – "Search removable media" and click the **[Next]** button. After that, the searching window is displayed. *If "Include this location in the search" is checked, uncheck it.

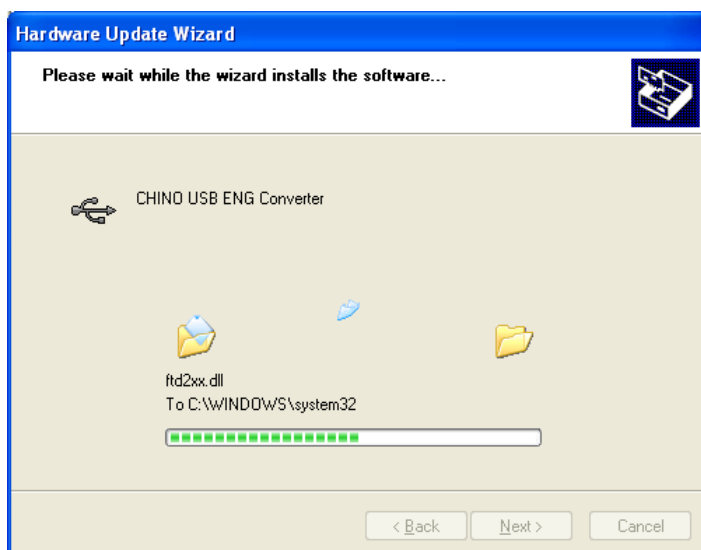




5. When the window shown left is displayed, select "CHINO USB ENG Converter 2.8.30.0 CHINO"
 e:\win_xp\eng\driver\windowsxp_ver2.8.30.0\ftdibus.inf" and click the **[Next]** button.

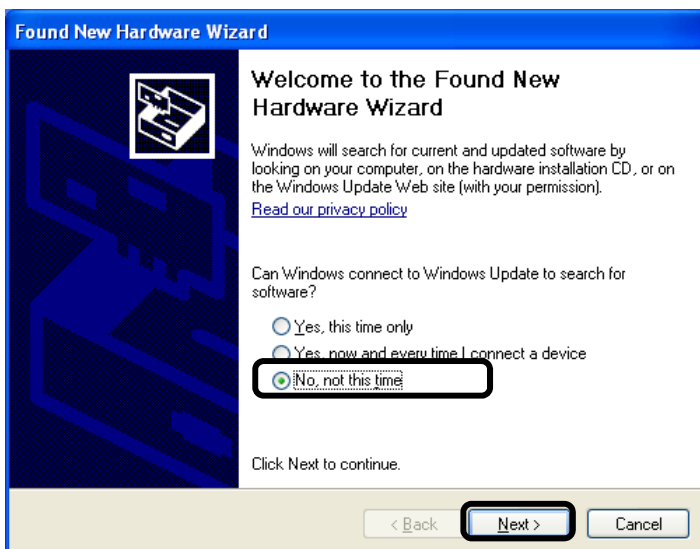


6. When the window shown left is displayed, click the **[Continue Anyway]** button. After that, the installation is started automatically.

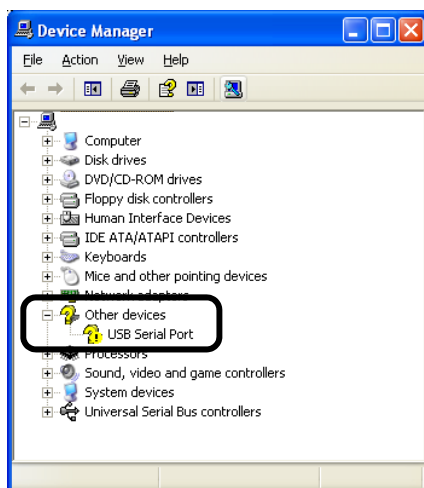




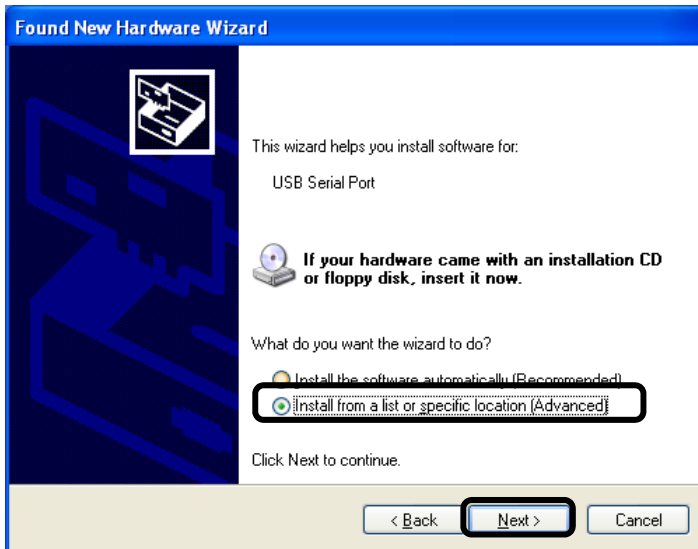
7. Completing the Hardware Update Wizard is displayed. Click the **[Finish]** button.



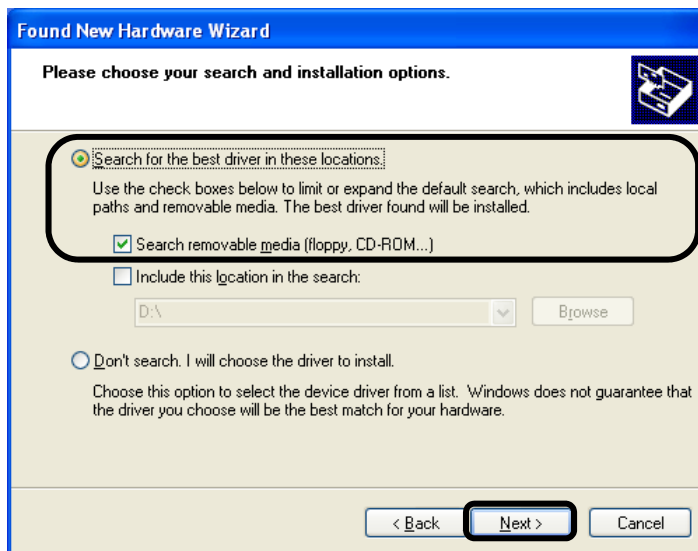
8. After completing CHINO USB ENG Converter installation, the window shown left is displayed. Select **"No, not this time"** and click the **[Next]** button.



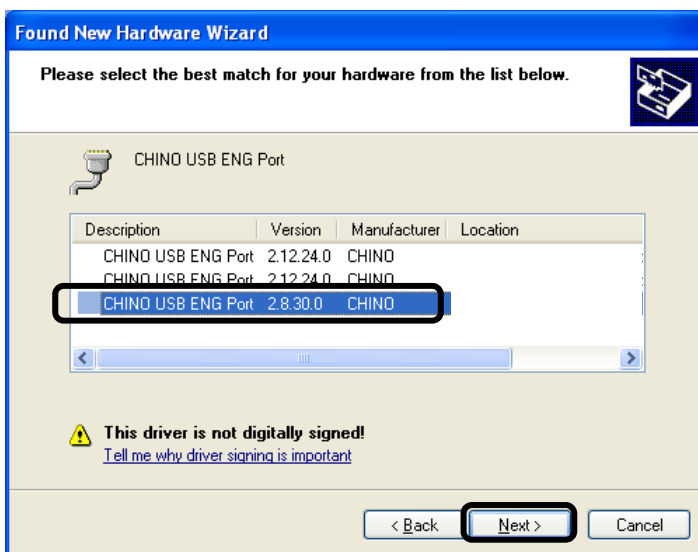
*If Welcome to the Found New Hardware Wizard is not displayed, right-click "Other devices" – "USB Serial Port" and then click the "Driver update".



9. When the installation method selection window is displayed, select "install from a list or specific location (Advanced)" and click the **[Next]** button.



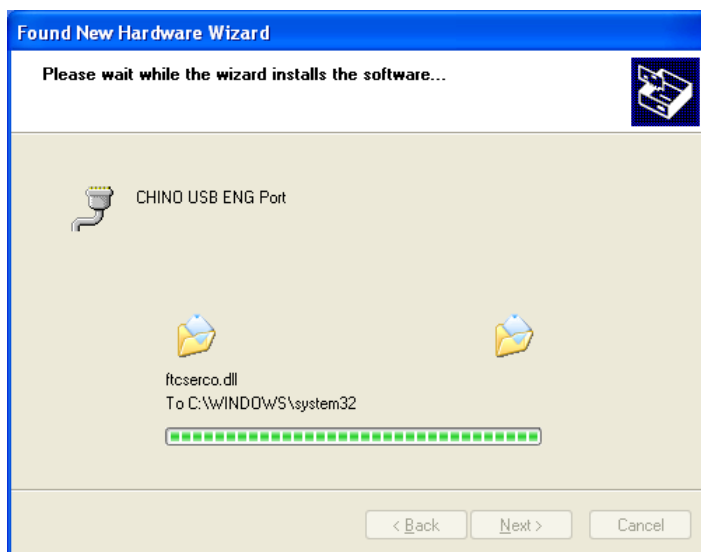
10. When the window shown left is displayed, select "Search for the best driver in these locations" – "Search removable media" and click the **[Next]** button. After that, the searching window is displayed. *If "Include this location in the search" is checked, uncheck it.



11. When the window shown left is displayed, select "CHINO USB ENG Port 2.8.30.0 CHINO e:\win_xp\eng\driver\windowsxp_ver2.8.30.0\ftdiport.inf" and click the **[Next]** button.

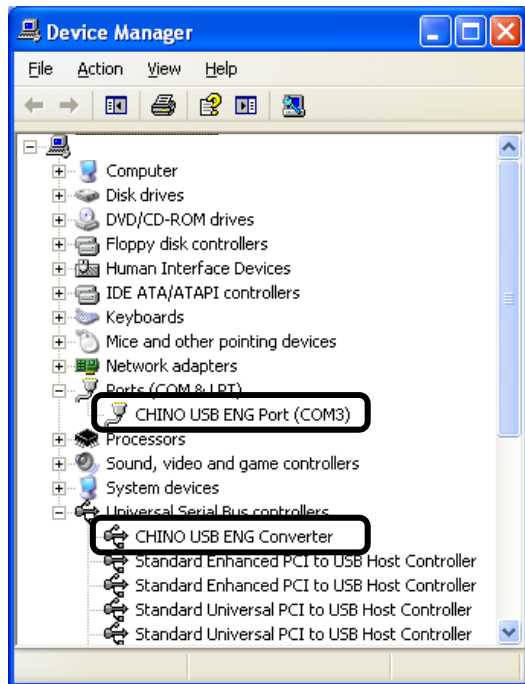


12. When the window shown left is displayed, click the **[Continue Anyway]** button. After that, the installation is started automatically.



13. Completing the Found New Hardware Wizard is display. Click the **[Finish]** button.

1-2 Confirmation after installation



1. Connect this product to the USB port of the PC.

2. Display the Device Manager.

Confirm that **[USB (Universal Serial Bus) controller]** and **[Port (COM and LPT)]** are displayed as follow.

[Port (COM and LPT)]

CHINO USB ENG Port (COM*)

[USB(Universal Serial Bus) controller]

CHINO USB ENG Converter

*The COM port number depends on the environment of your PC.

* After connecting this product to the USB port of the PC, it may take time to recognize this product. Confirm the COM port number before starting communication.

3. Close the screen after confirmation.

Now this product has been recognized by your PC correctly and ready for use.



Caution

- (1) For the COM port number, the smallest available number on your PC is automatically assigned to this product.
(The COM port number depends on the environment of your PC.)
- (2) The COM port number can be changed from the property of **[CHINO USB ENG Port (COM*)]** on the **[Device Manager]** screen.
- (3) To change the COM port number, DO NOT set several identical COM port numbers. Make sure to use unused COM port number.

2 Uninstallation for Windows XP

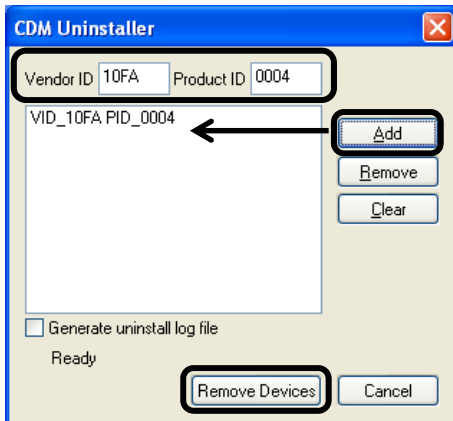
2-1 Uninstallation

1. If RZ-EC4 cable is connected to the PC, remove it.

2. Double-click "CDMuninstallerGUI.exe" in the "Uninstall" folder in the attached CD-ROM.

3. When "CDM Uninstaller" is displayed, set the following procedures.

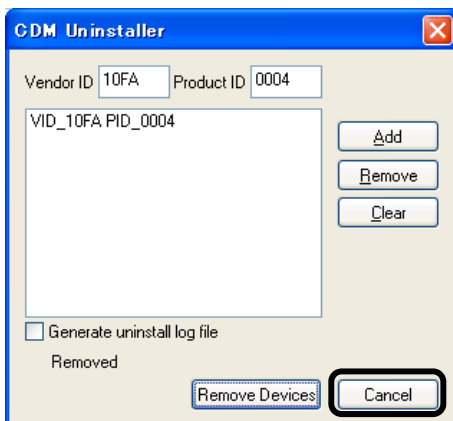
- (1): Set "10FA" in Vendor ID box.
- (2): Set "0004" in Product ID box.
- (3): Click the **[Add]** button to confirm that "VID_10FA PID_0004" is displayed in the center box.
- (4): Click **[Remove Devices]**.



4. Uninstallation completed screen is displayed.
Click **[OK]**.



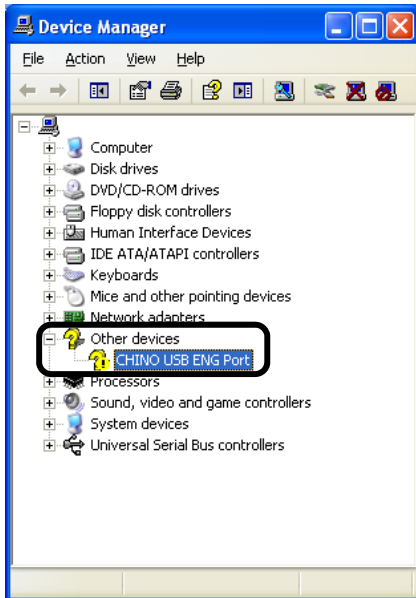
5. Click the **[Cancel]** button and close the "CDM Uninstaller" screen.



2-2 Confirmation after uninstallation

1. Connect RZ-EC4 cable to the PC.

*If Found New Hardware Wizard written on procedure 3 of "1-1 Installation" is displayed, click the **[Cancel]** button.



2. Display the Device Manager window.

Confirm that "?" is displayed on the "Other Devices" – "CHINO USB ENG port" like the window shown left.

3. Close the screen after confirmation.

Now confirm that this product is uninstalled correctly from the PC.